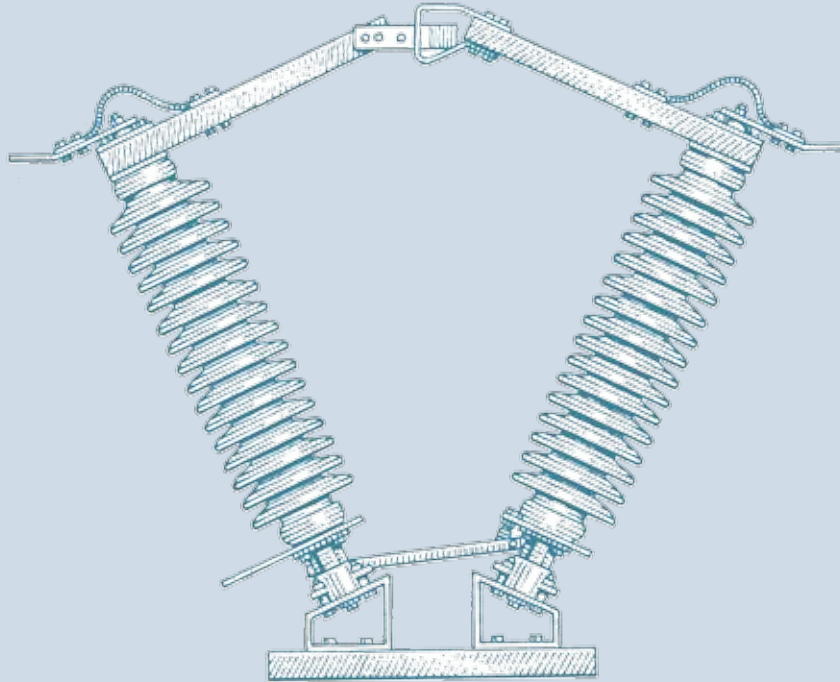


FAS2V



INTRODUCTION & TYPE TEST DATE : 2013		ANNUAL UNITS PRODUCED : 300	
VOLTAGE : 8.3-72.5 kV	BIL : 95-350 kV	CONTINUOUS CURRENT : 1200 AMPS	
SHORT CIRCUIT : 99 kA PEAK (38 kA 3 SECOND)		INSULATOR : LAPP	

The FAS2V is an economical two insulator center side break VEE switch. Operation of the switch is accomplished through rotation of two insulators. The hinge current transfer is achieved through fixed maintenance free braids eliminating pivoting current transfer points and provides a low operating effort. The FAS2V's small footprint can be supported by fewer columns which reduces associated steel and foundation costs. The FAS2V requires minimum overhead clearance but requires additional clearance between phases and allows for increased phase to ground clearance for cable drops.

Pascor Atlantic Advantages



Applications

- 105 years of continuous service to electrical industry
- IEEE NEMA standards met
- Shortest lead time in the market
- Quality products and processes
- Enhanced factory Capabilities
- Dedicated Workforce
- High precision machinery
- Maintenance free bearings
- On time delivery
- Extensive technical and Field service support

FAS 2V

- Mounting: vertical, horizontal or inverted
- 7.5-230 kV
- 1200-2000 AMPS
- Line disconnecting, circuit breaker by pass and isolation and transformer isolation
- Standard configuration available
- Minimal Structure Required

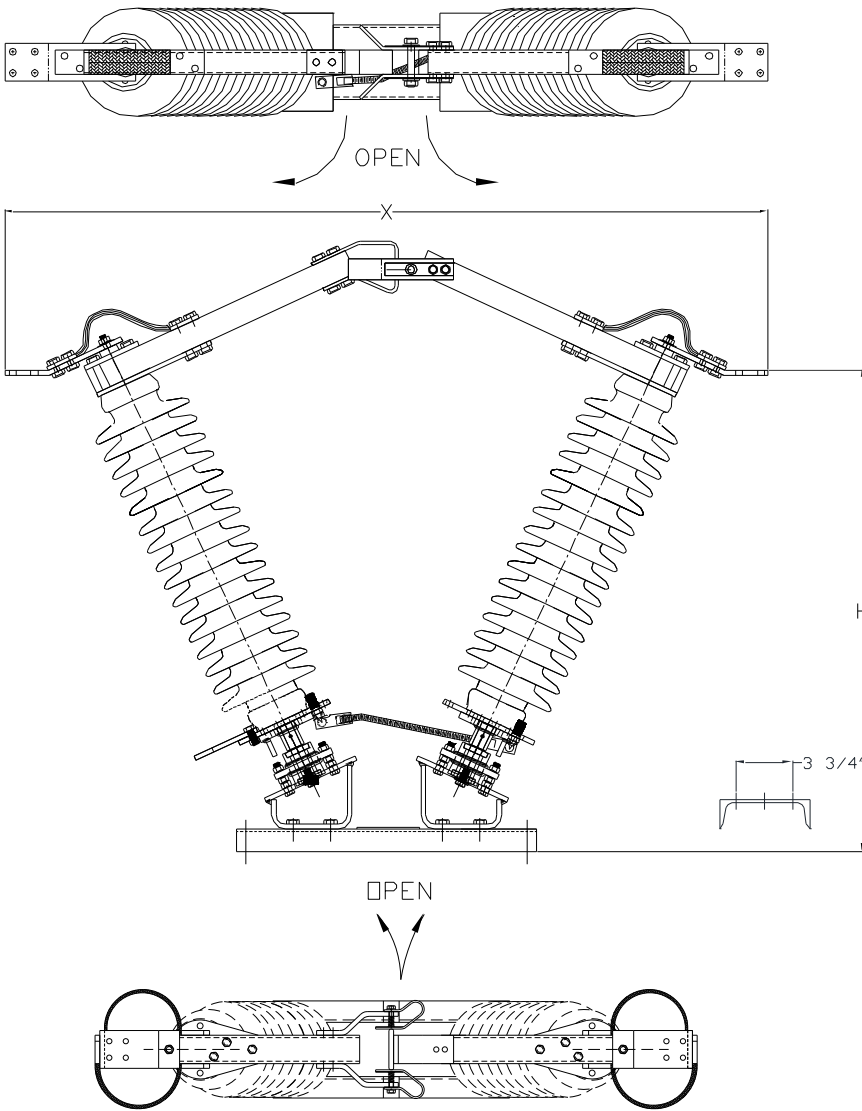
Standard Accessories

- Arcing horns
- Tin plated copper components used in critical current transfer areas
- Leveling screws
- Silver to Silver contacts upon request
- Sliding link interphase rods

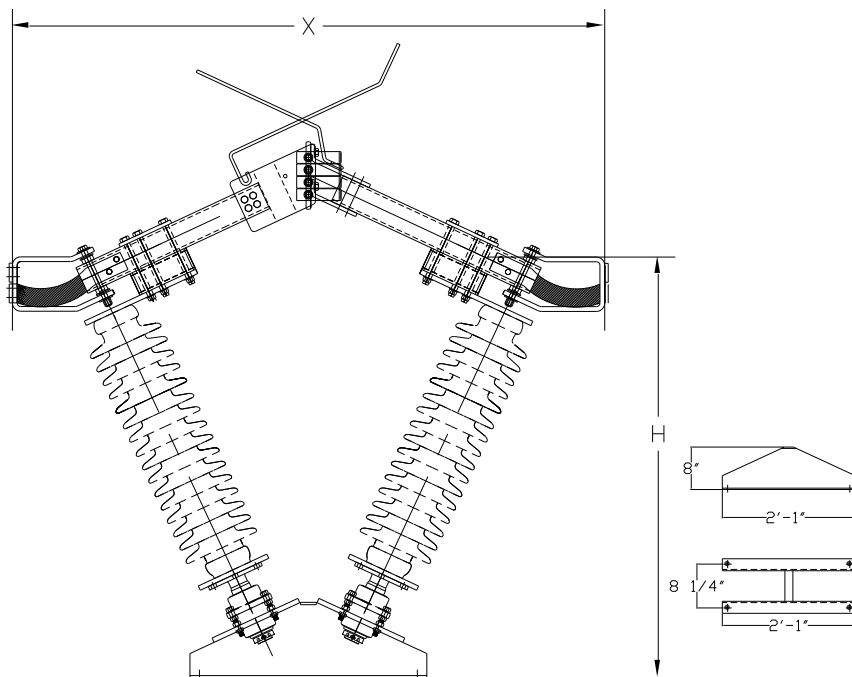
Performance Features

- Self-cleaning/wiping jaws
- Easily field replaceable contacts
- Low maintenance
- Can be used with: Swing handle, worm gear or a motor operator
- Hard-drawn extruded aluminum materials
- ¾" Ice breaking
- Tested to 1,500 plus open/close operations completed
- Maintenance free bearings





FAS2V 1200A		
kV	X	H
7.5	3'-8 3/8"	1'-9"
15	3'-8 3/8"	1'-9"
23	3'-11 11/16"	2'-0 1/2"
34.5	2'-4"	4'-3 1/16"
46	4'-6 7/16"	2'-7 3/4"
69	5'-1 3/16"	3'-3"
115	6'-3 5/8"	4'-10 3/8"
138	6'-11 1/8"	5'-6 9/16"
161	7'-5 15/16"	6'-1 3/4"
230	9'-8 1/4"	7'-6"



FAS2V 2000A		
kV	X	H
7.5	4'-4 1/2"	2'-9 11/16"
15	4'-4 1/2"	2'-9 11/16"
23	4'-4 1/2"	2'-9 11/16"
34.5	4'-4 1/2"	2'-9 11/16"
46	4'-7 15/16"	3'-1 5/16"
69	5'-2 11/16"	3'-8 9/16"
115	6'-3 5/8"	4'-10 3/8"
138	6'-11 1/8"	5'-6 9/16"
161	7'-5 15/16"	6'-1 3/4"
230	9'-8 1/4"	7'-6"

Pascor Atlantic
 (276) 688-3328
 254 Industry Drive
 Bland, Virginia 24315
www.pascoratlantic.com