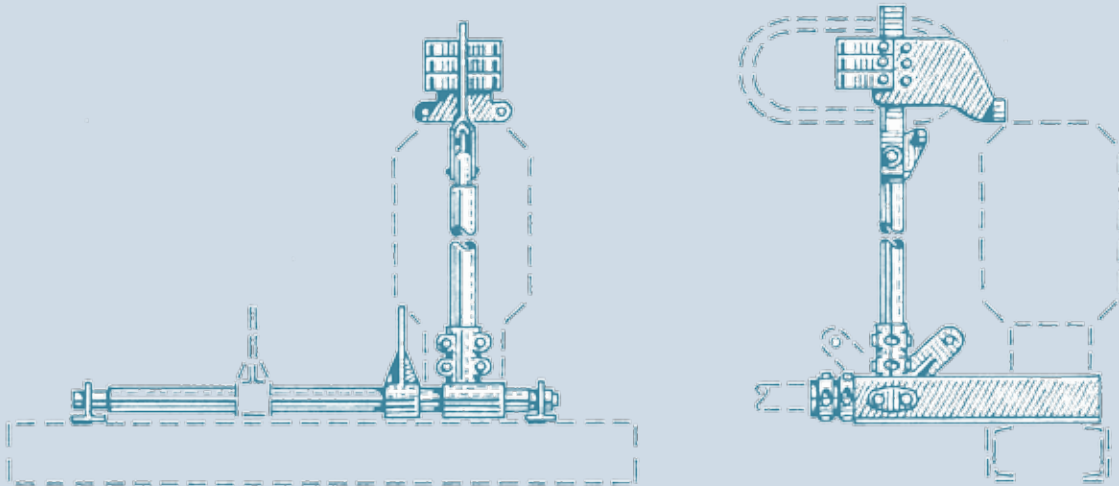


AG7



INTRODUCTION & TYPE TEST DATE : 1976	ANNUAL UNITS PRODUCED : 45
UNITS IN SERVICE : > 3000	CONTINUOUS CURRENT : NOT APPLICABLE
SHORT CIRCUIT : 131 kA PEAK (50 kA 3 SECOND)	VOLTAGE : 8.3-245 kV
BIL : 95-900 kV	INSULATOR : LAPP -----

The AG-7 switch is a single insulator ground switch design. Operation of the switch is accomplished through rotation of the blade into the contact area. Aluminum components are utilized throughout the design except in critical current transfer areas where copper and copper alloy castings are employed. Sealed high pressure current transfer joints in the blade hinge assure trouble free operation. Switch bases are constructed from galvanized structural steel channel. The AG-7 ground switch can be mounted to a disconnect switch, or free standing and integrated into a bus support application.