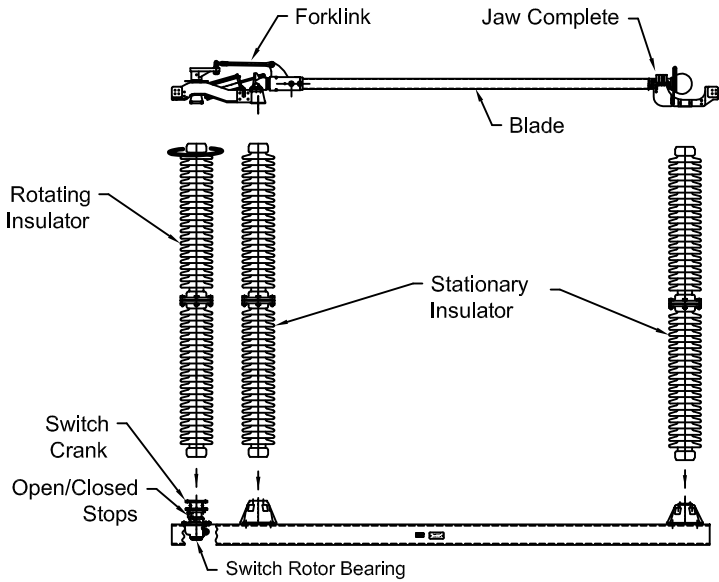
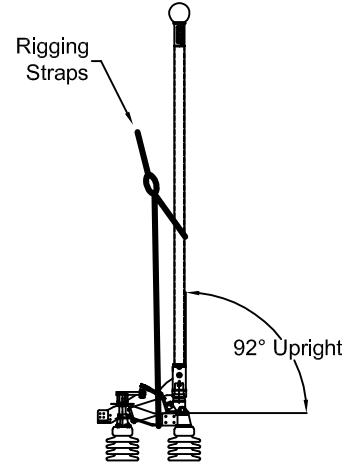


1 Verify Structure is Level and Plumb
Mounting Holes Match Installation Drawings

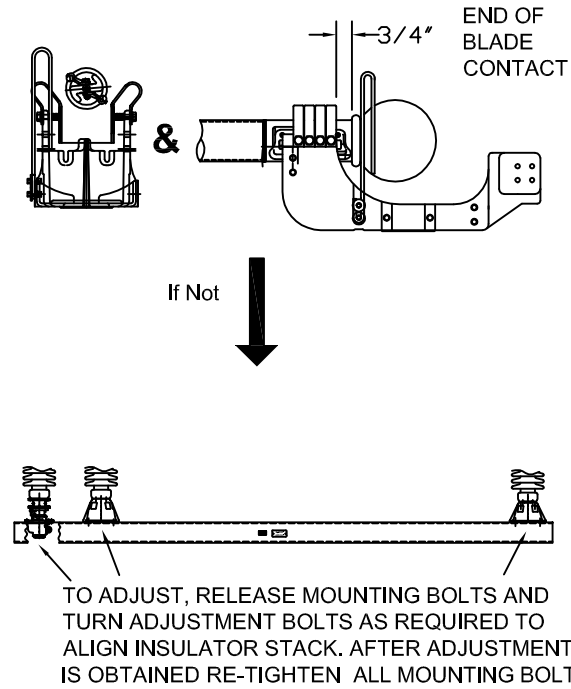
2 Assemble Single Pole
Plumb Insulators



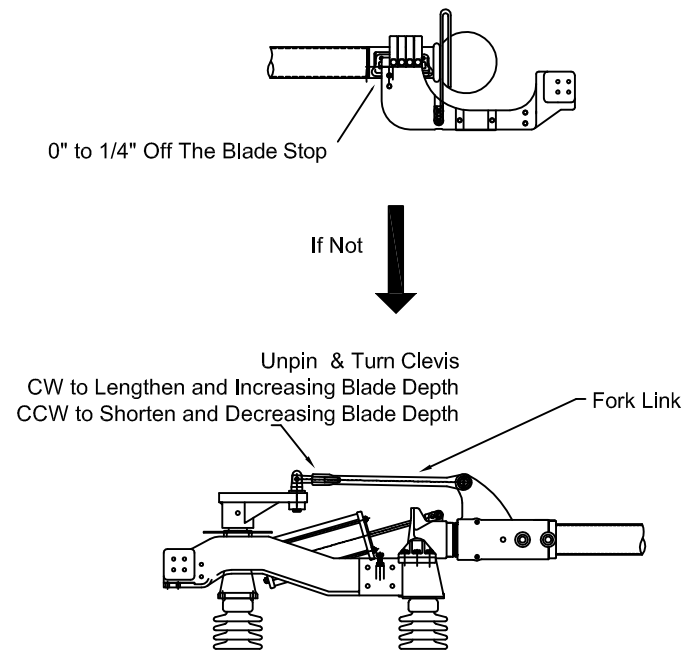
2A Rigging to Install Blade



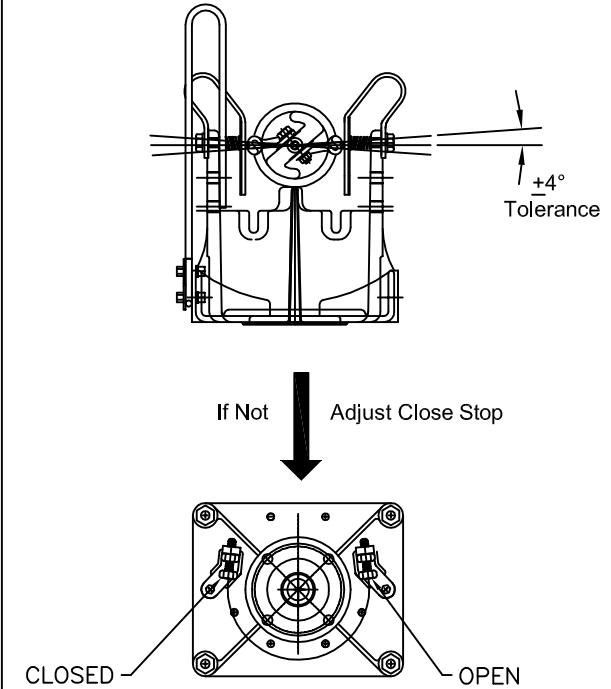
3 Center Blade In Jaw



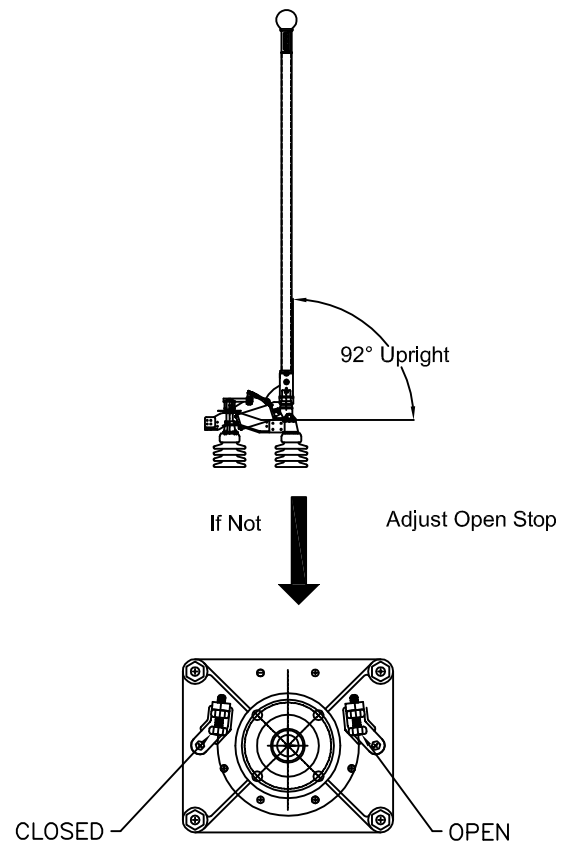
4 Check Blade Depth In Jaw



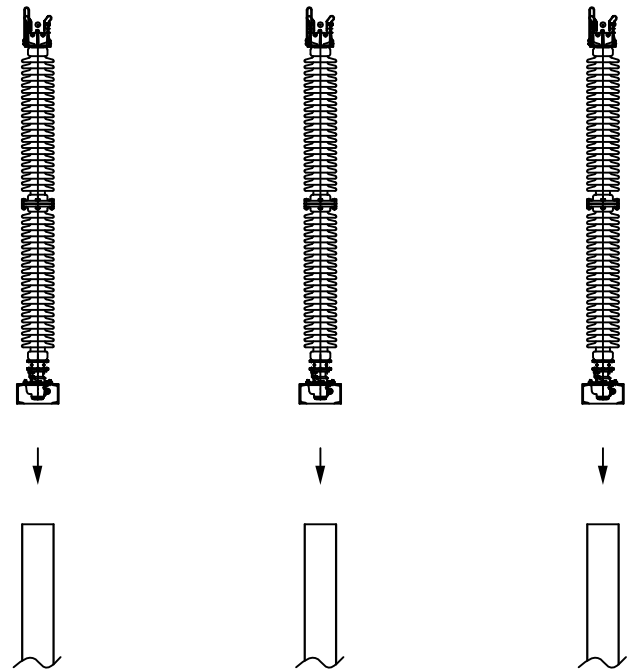
5 Check Blade Angle
Blade Angle Tolerance is $\pm 4^\circ$



6 Check Blade Opening

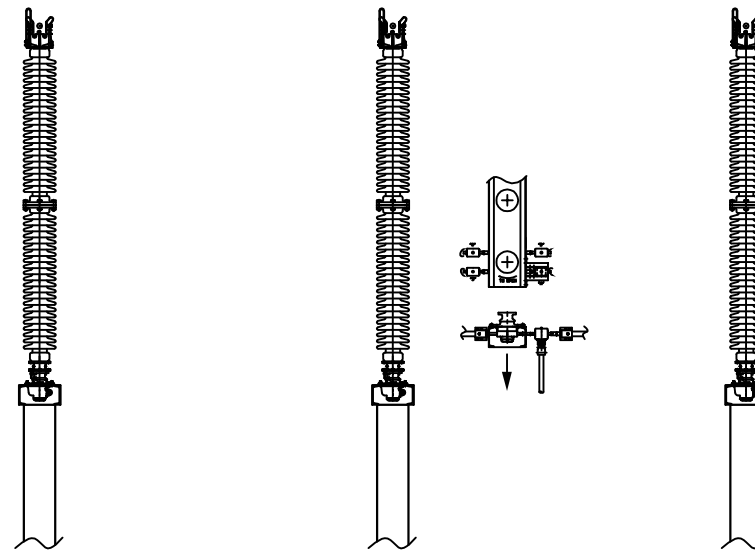


7 Install Single Poles on Structure



8 Mount Gear Box

To appropriate phase as shown on
Installation Drawings



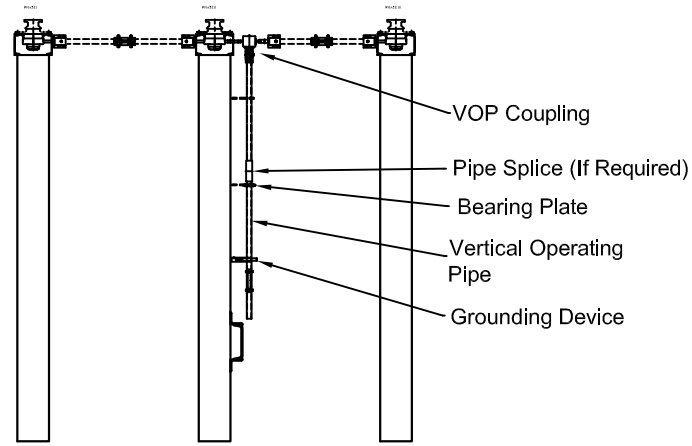
254 INDUSTRY DRIVE, BLAND VA. 24315, 276-688-3328

500KV TTR6 Vertical Break Gear Drive

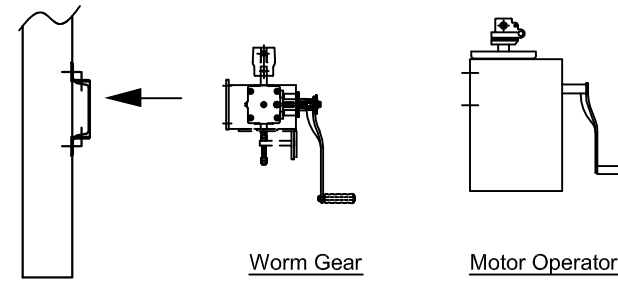
Basic Installation Guide

** This manual should be used in conjunction with the factory drawings. To request a set of drawings please have the serial number of the switch and contact the factory at 276-688-3328.

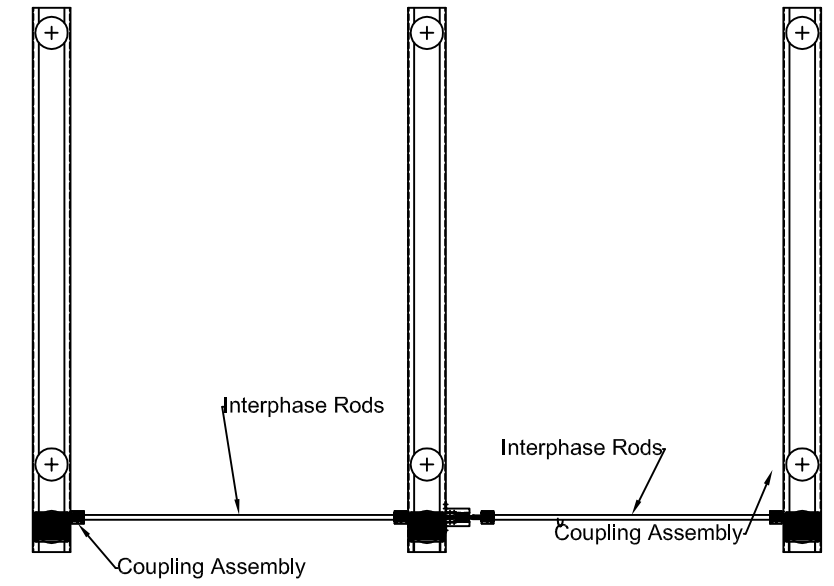
10 Install Vertical Operating Pipe
Install Pipe Splice, Bearing Plate, Position Indicators, and Grounding Device



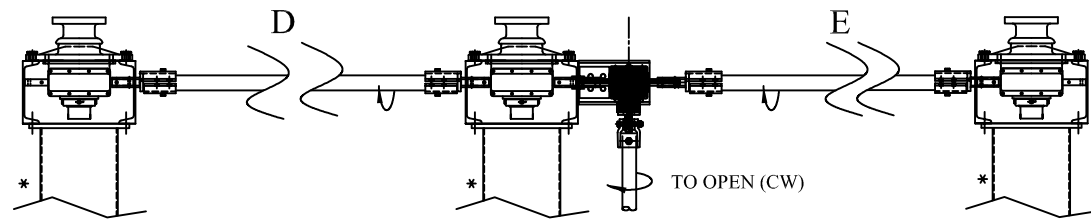
11 Install Operator



12 Install Interphase Linkage

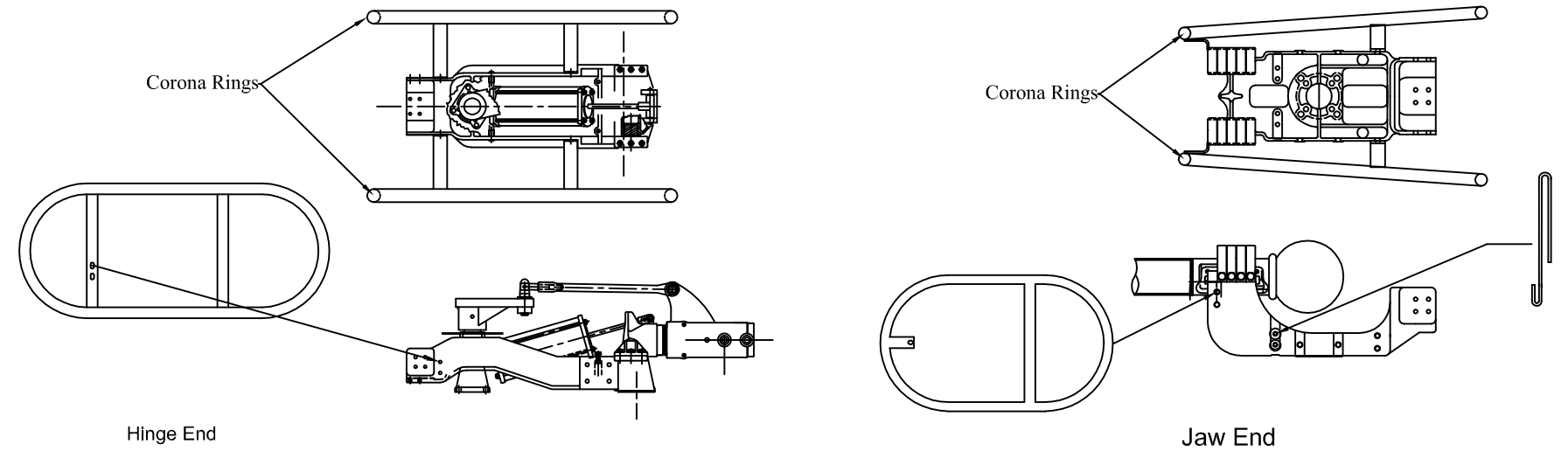


13 Adjust Interphase Linkage



To adjust the timing of the phases, Loosen the couplings bolts in the desired phase and rotate the worm gear shaft on the rotating insulator.
Example: If phase "A" is lagging during opening, rate the worm shaft approximately half turn counter-clockwise, then tighten bolts and check adjustment.

14 Install Arcing Horns and Corona Rings



15 Final Checks

