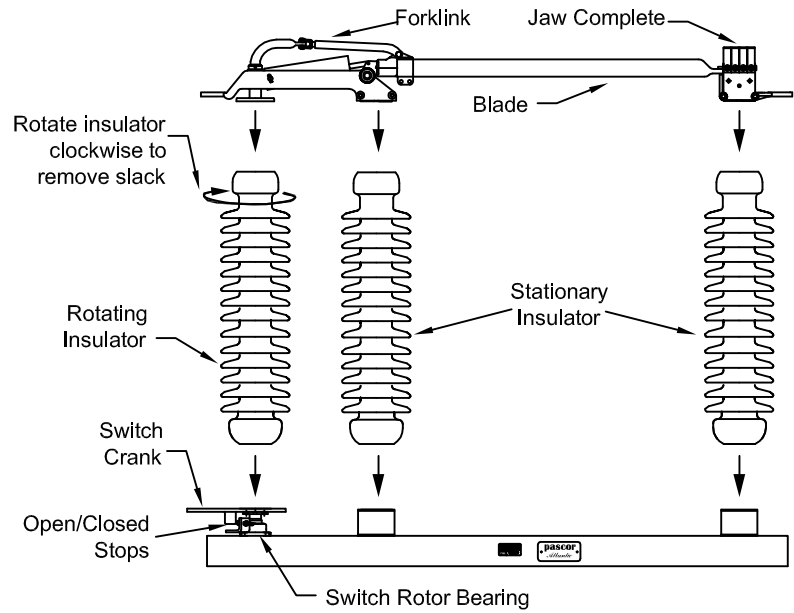
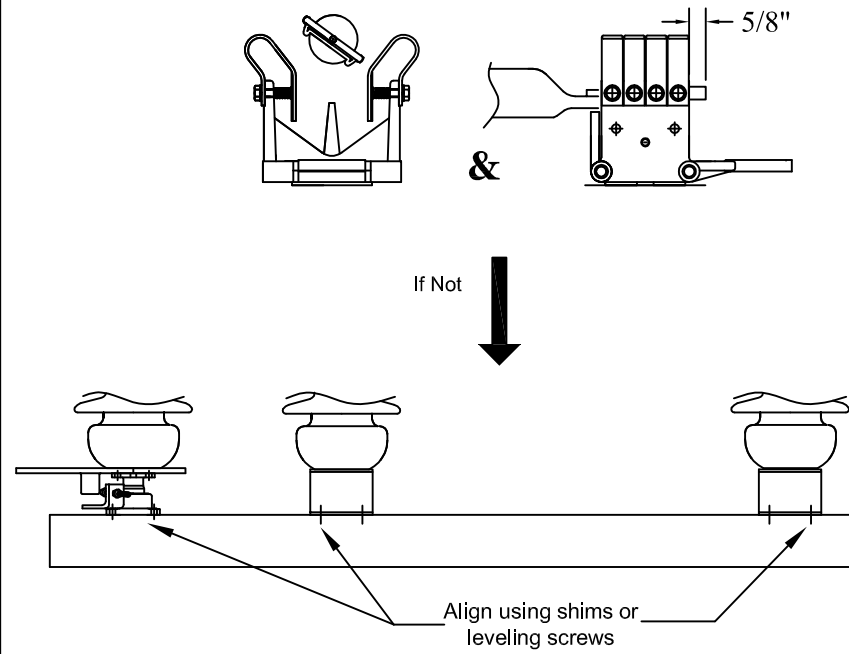


**1** Verify Structure is Level and Plumb  
Mounting Holes Match Installation Drawings

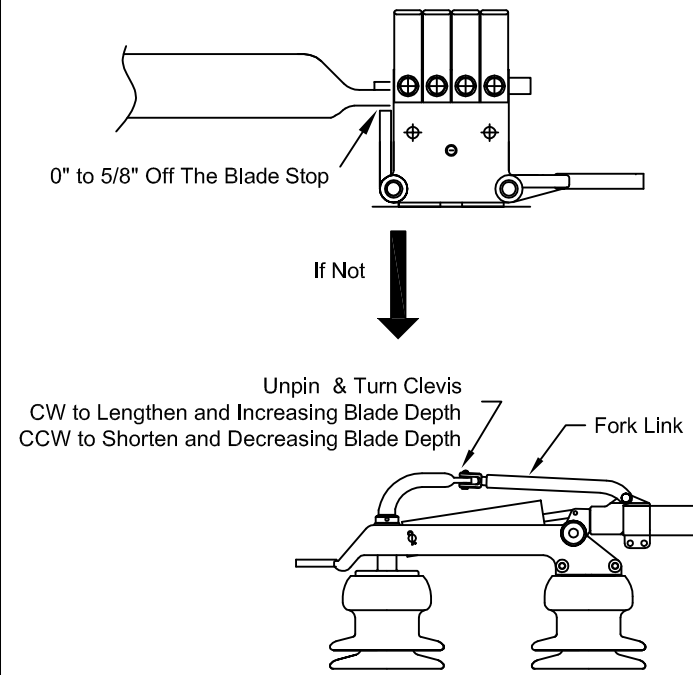
**2** Assemble Single Pole  
Plumb Insulators



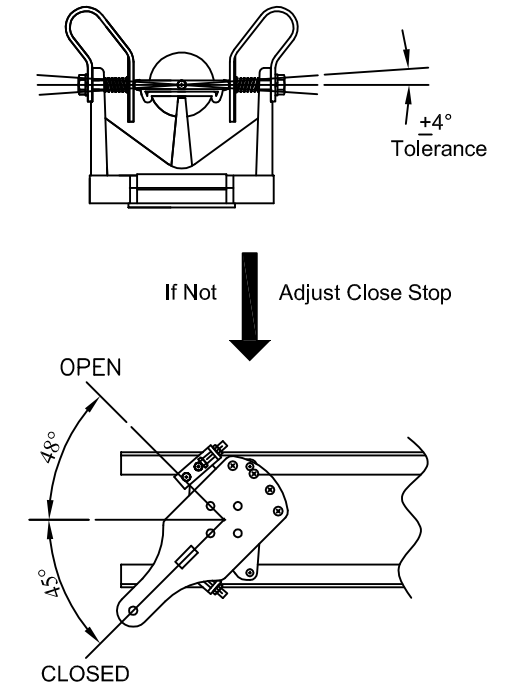
**3** Center Blade In Jaw



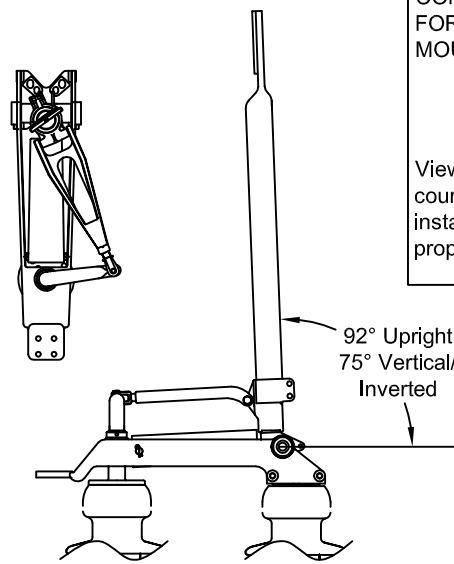
**4** Check Blade Depth In Jaw



**5** Check Blade Angle  
Blade Angle Tolerance is  $\pm 4^\circ$



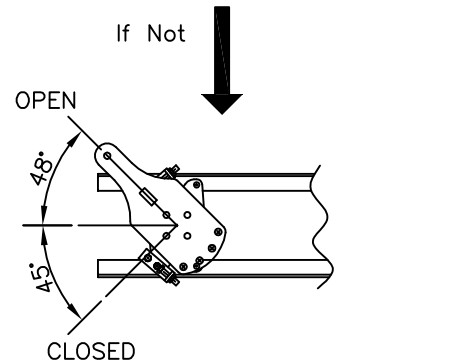
**6** Check Blade Opening



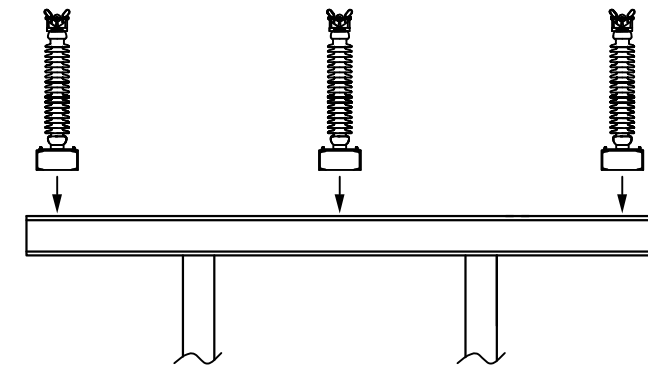
CONNECT HERE FOR UPRIGHT MOUNTING



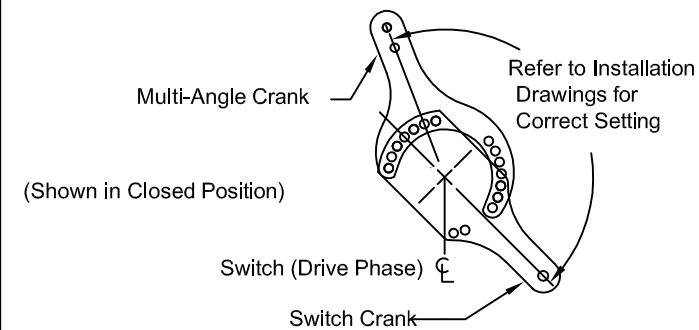
View showing connection of blade counterbalance. See page 12 of the installation and adjustment manual for proper procedures to change positions.



**7** Install Single Poles on Structure

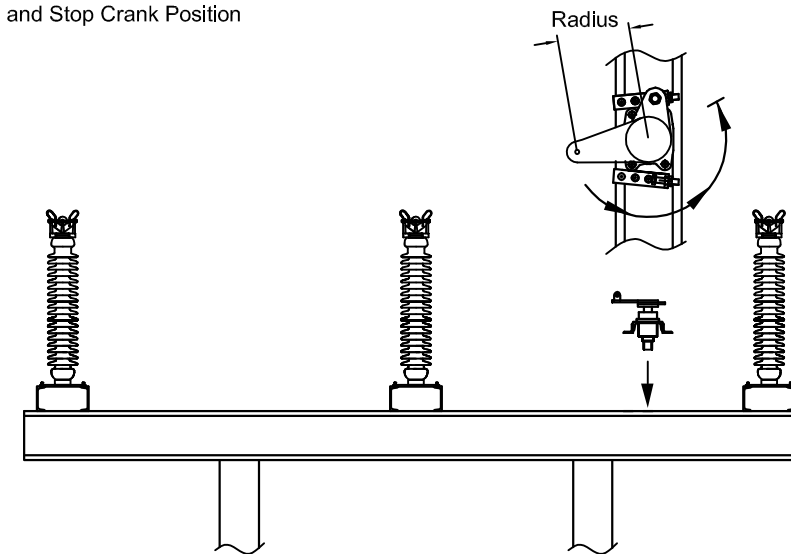


**8** Install Multi-Angle Crank  
Refer to Installation Drawings For Correct Setting



**9** Mount Offset Bearing

Refer to Installation Drawings for Correct Operating Crank Length Radius and Angle, and Stop Crank Position



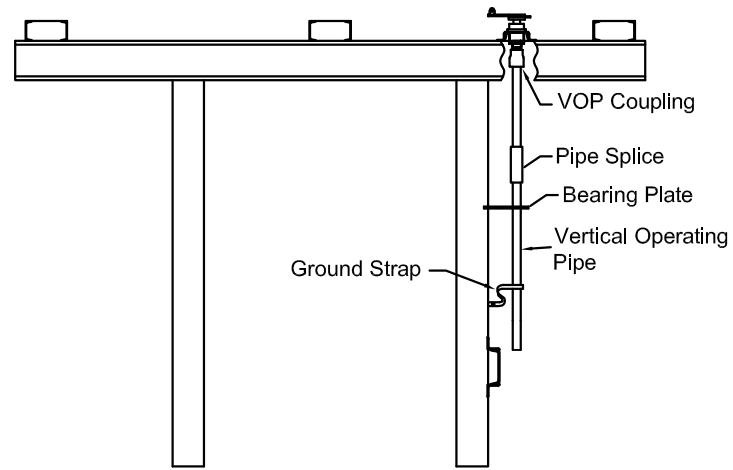
254 INDUSTRY DRIVE, BLAND VA. 24315, 276-688-3328

**TTR-8 Vertical Break**

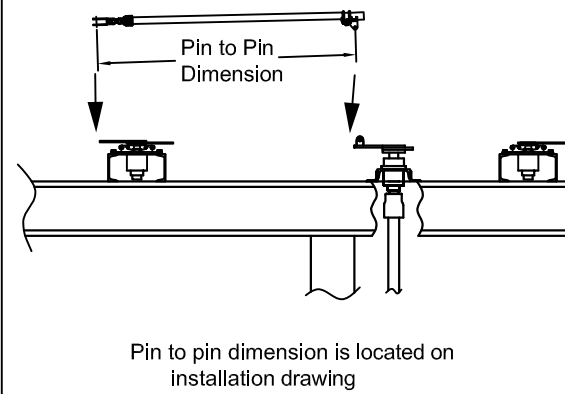
**Basic Installation Guide**

\*\* This manual should be used in conjunction with the factory drawings. To request a set of drawings please have the serial number of the switch and contact the factory at 276-688-3328.

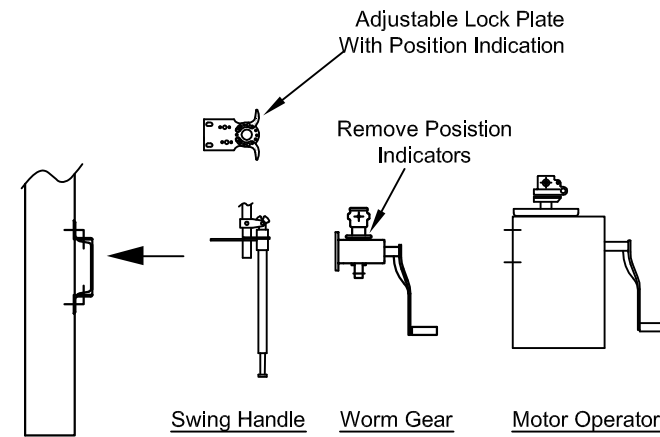
### 10 Install Vertical Operating Pipe Install Pipe Splice, Bearing Plate, Position Indicators, and Ground Strap



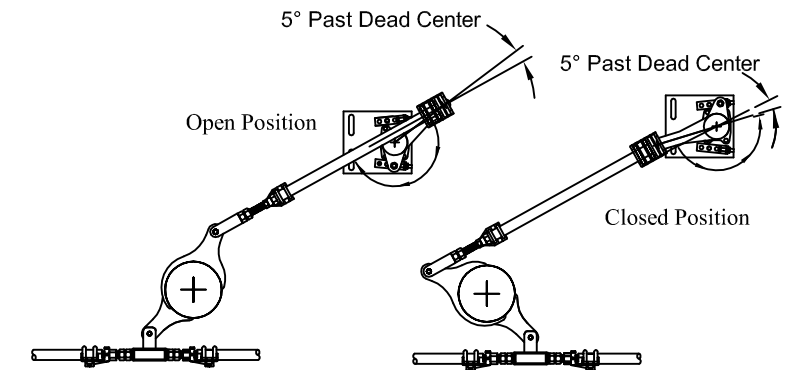
### 11 Install Offset Rod



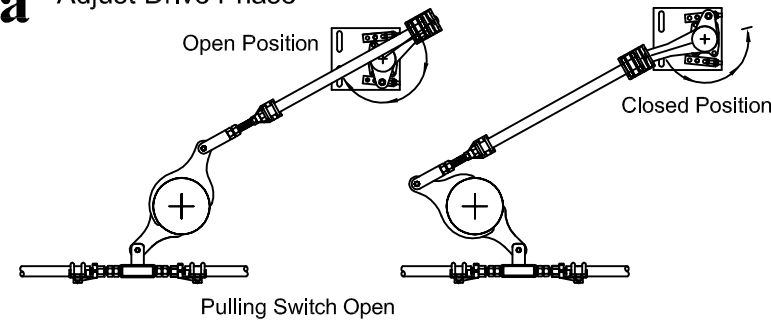
### 12 Install Operator



- Dead Center ~ "Toggle"
- Offset bearing crank travels past dead center.
  - When operating the switch, the offset bearing should "snap" over dead-center in the closed and open positions. This is also referred to as toggle. This serves as a signal to the operator that the switch is either fully open or closed. This is also a safety feature that insures the switch is locked either in the open or closed position.



### 13a Adjust Drive Phase



#### Shortening Offset Rod

- Reduces toggle pressure in closed and adds pressure to open position.
- Increase blade opening and decrease blade closing.

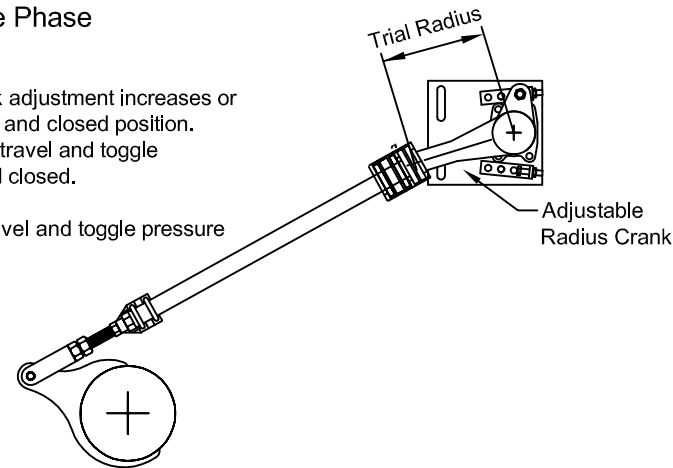
#### Lengthening Offset Rod

- Reduces toggle pressure in open and adds pressure to closed position.
- Increase blade closing and decrease blade opening.

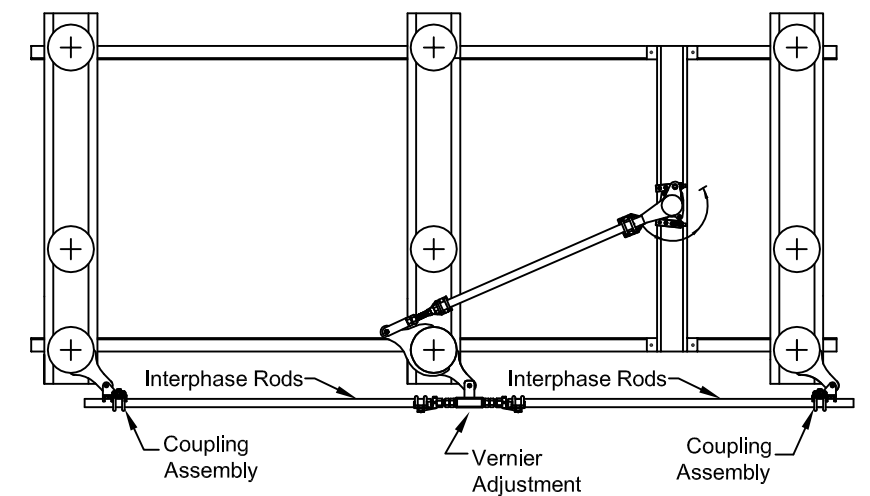
### 13b Adjust Drive Phase

The adjustable radius crank adjustment increases or decrease throw to the open and closed position.

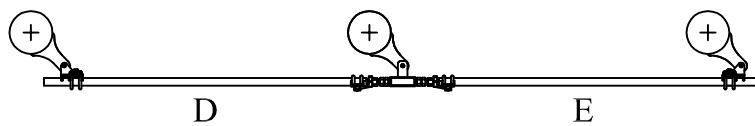
- Lengthening increases travel and toggle pressure in open and closed.
- Shortening reduces travel and toggle pressure in open and closed.



### 14 Install Interphase Linkage



### 15 Adjust Interphase Linkage



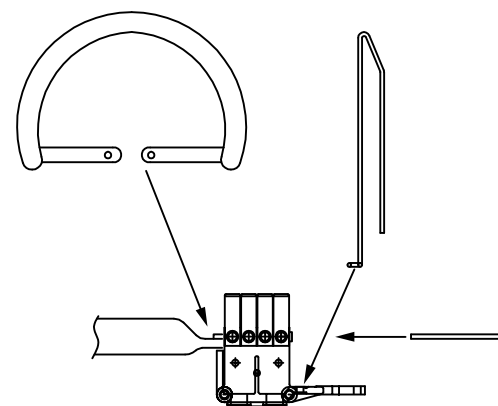
#### Interphase Pipe "D"

- Shorten will close more and open less.
- Lengthening will open more and close less.

#### Interphase Pipe "E"

- Shortening will open more and close less.
- Lengthening will close more and open less.

### 16 Install Arcing Horns and Corona Rings (If Applicable)



### 17 Final Checks

