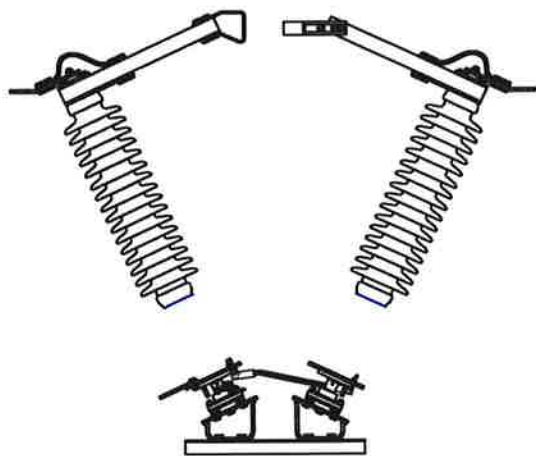


1 Verify Structure is Level and Plumb
Mounting Holes Match Installation
Drawings

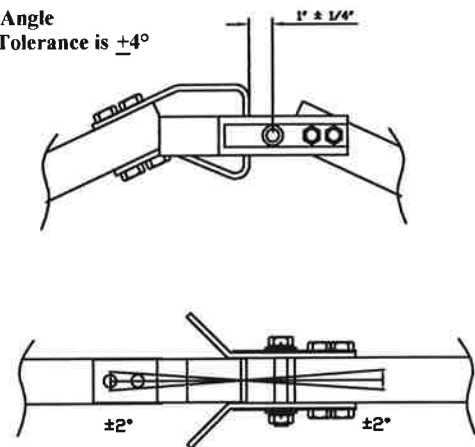
IMPORTANT

2 Attach Bus or Cables



3 Check Blade Depth In Jaw

4 Check Blade Angle
Blade Angle Tolerance is $\pm 4^\circ$



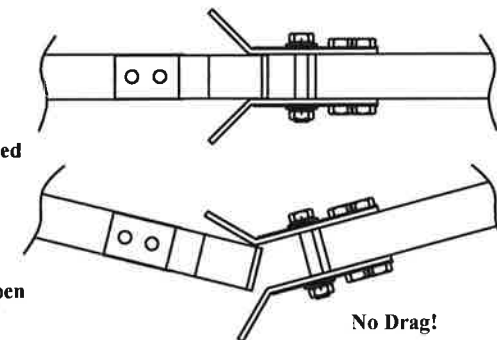
Adjust Closed Stop



5a. Check Blade Opening

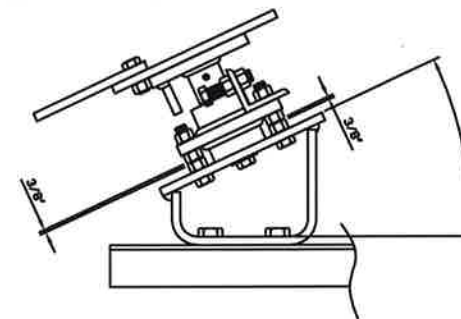
Fully Closed

Partial Open

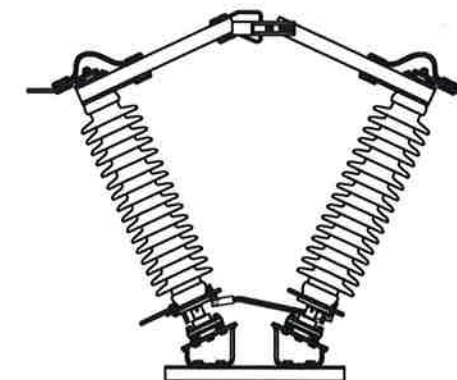
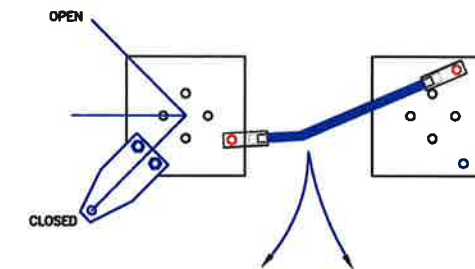


If Not

Adjust Leveling Screws to Eliminate
Drag.

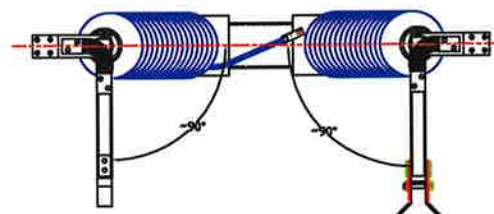
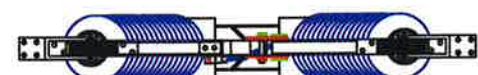
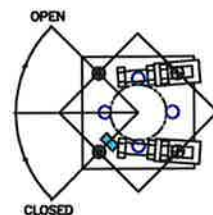


5b. Check Blade Closing

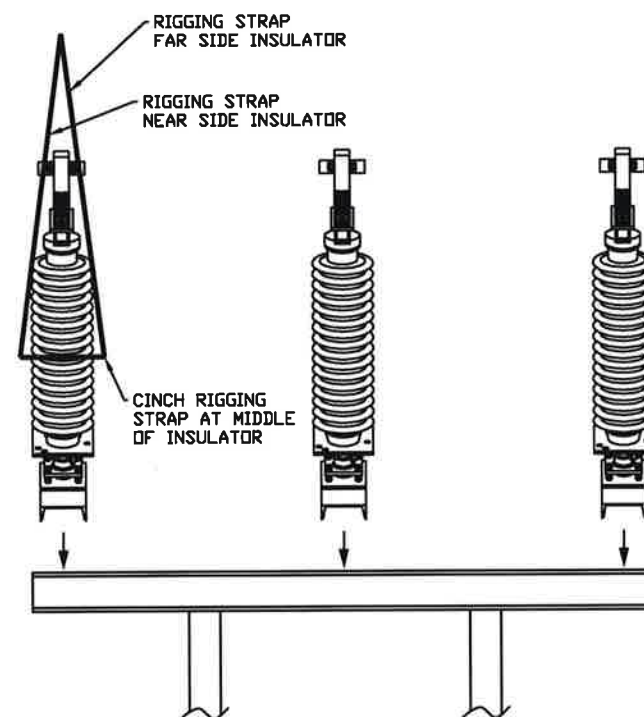


- Bent End of Interpole Linkage Drive Side Only
- Drive Side of Switch on Beavertail Side Only

6 Open / Close Stop Adjustment

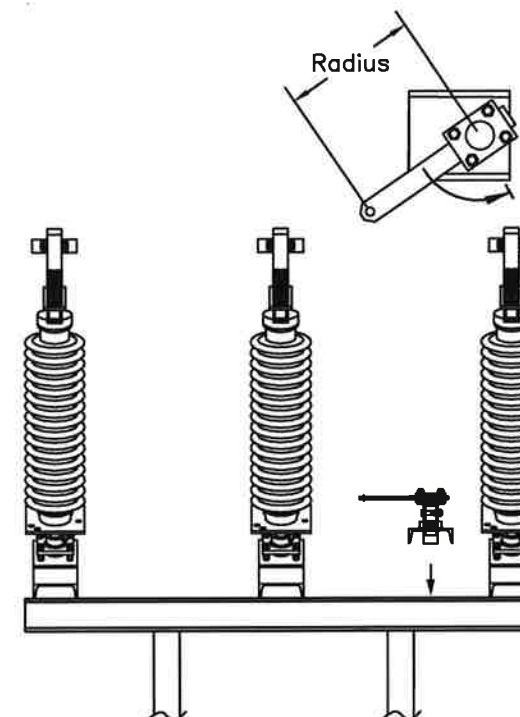


7 Install Single Poles on Structure



8 Mount Offset Bearing

Refer to Installation Drawings for Correct
Operating Crank Length Radius and
Angle, and Stop Crank Position



**PASCOR
ATLANTIC**

254 INDUSTRY DRIVE, BLAND VA. 24315, 276-688-3328

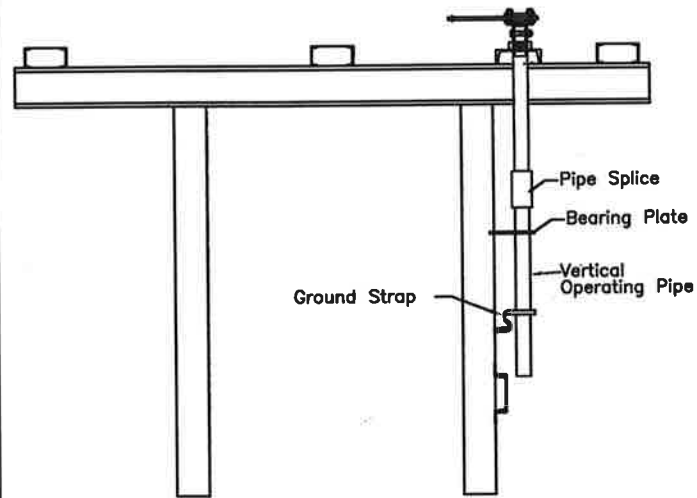
FAS2-V Center Break

Basic Installation Guide

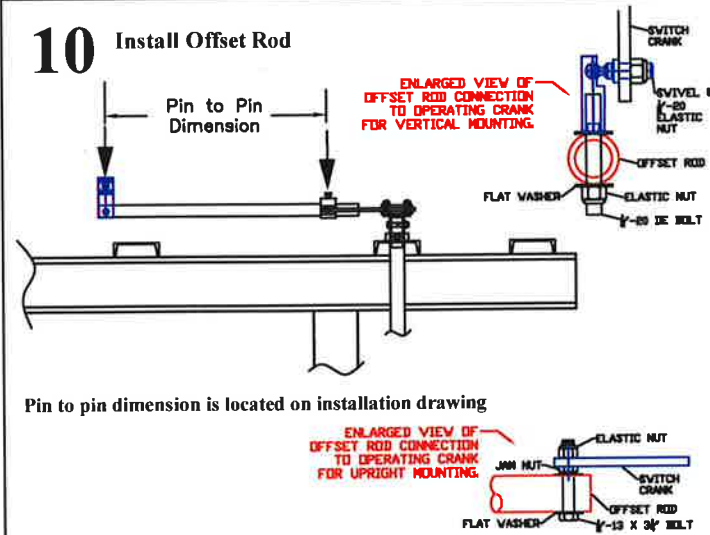
** This manual should be used in conjunction with the factory drawings. To request a set of drawings please have the serial number of the switch and contact the factory at 276-688-3328.

9 Install Vertical Operating Pipe

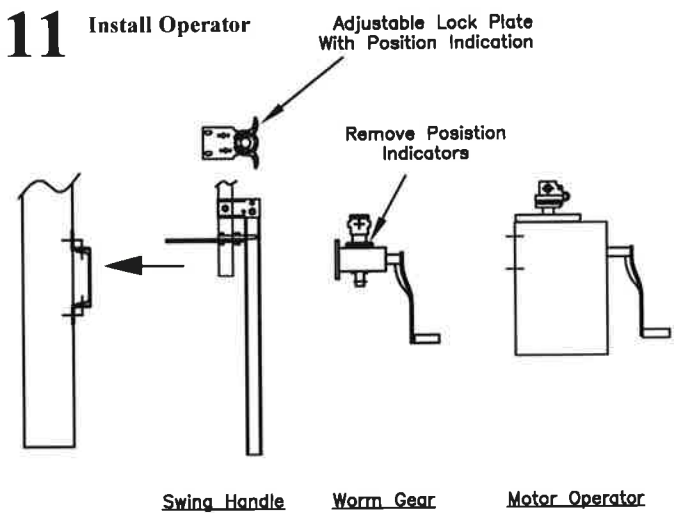
Install Pipe Splice, Bearing Plate, Position Indicators, and Ground Strap



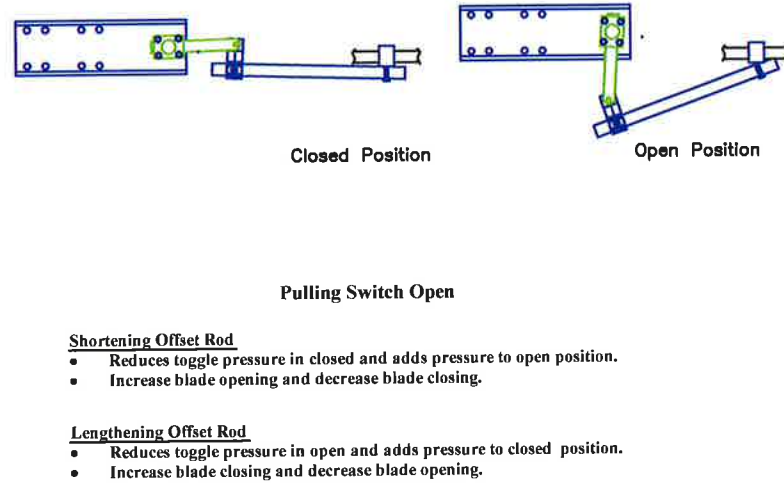
10 Install Offset Rod



11 Install Operator



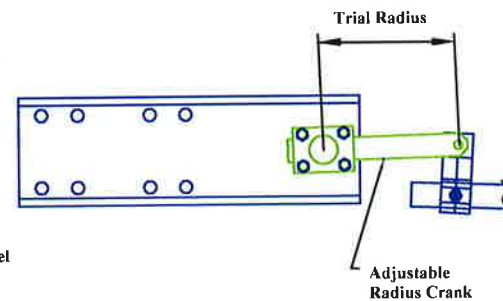
12a Adjust Drive Phase



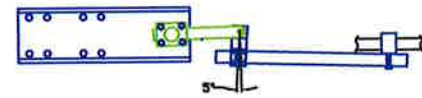
12b Adjust Drive Phase

The adjustable radius crank adjustment increases or decrease throw to the open and closed position.

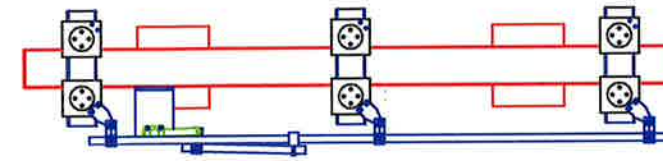
- Lengthening increases travel and toggle pressure in open and closed.
- Shortening reduces travel and toggle pressure in open and closed.



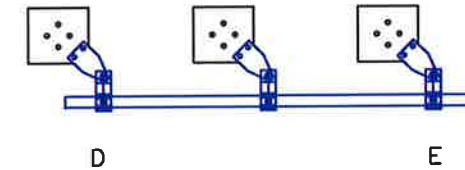
- Dead Center ~ "Toggle"**
- Offset bearing crank travels past dead center.
 - When operating the switch, the offset bearing should "snap" over dead-center in the closed position. This is also referred to as toggle. This serves as a signal to the operator that the switch is fully closed. This is also a safety feature that insures the switch is locked in the closed position.



13 Install Interphase Linkage



14 Adjust Interphase Linkage



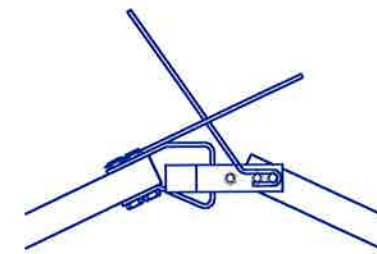
Interphase Pipe "D"

- Shorten will close more and open less.
- Lengthening will open more and close less.

Interphase Pipe "E"

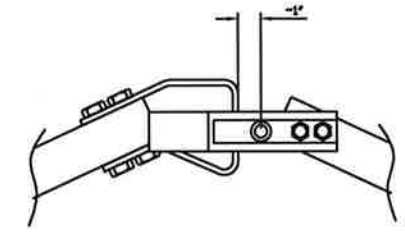
- Shortening will open more and close less.
- Lengthening will close more and open less.

15 Install Arcing Horns and Corona Rings (If Applicable)

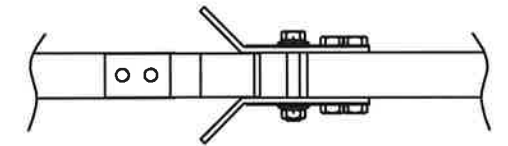


16 Final Checks

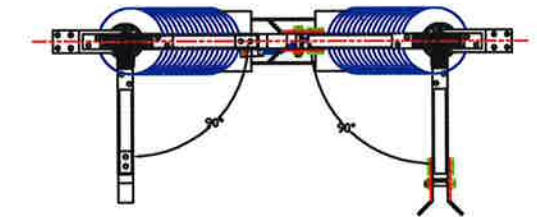
- Blade Centered in Jaw
- Blade is 0" to 1/2" Off the Blade Stop



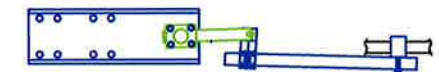
- Blade Contact Angle is $\pm 4^\circ$ in Jaw



- Blade Opening



- The offset bearing toggles in the close position.



- All jaw mounting bolts are tightened with switch in close position.
- Tighten all locking nuts and pierce bolts.
- For worm gears - Position indicators are installed.

