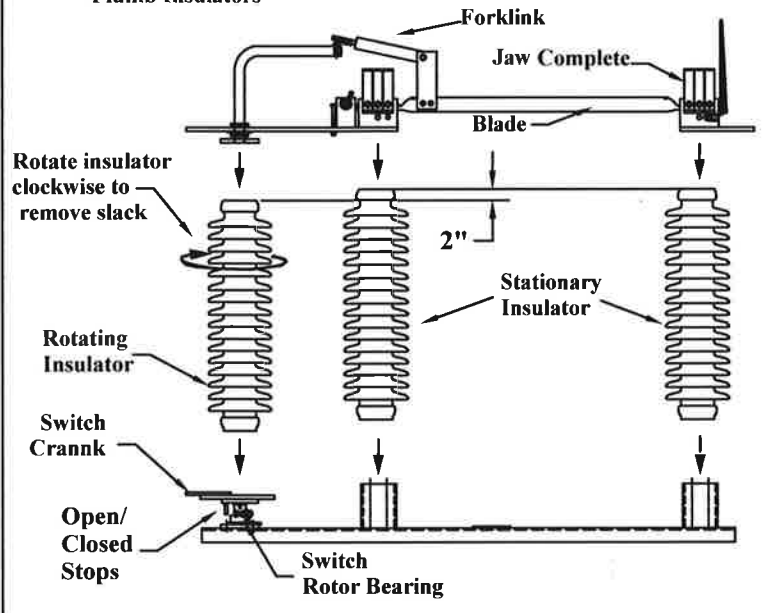


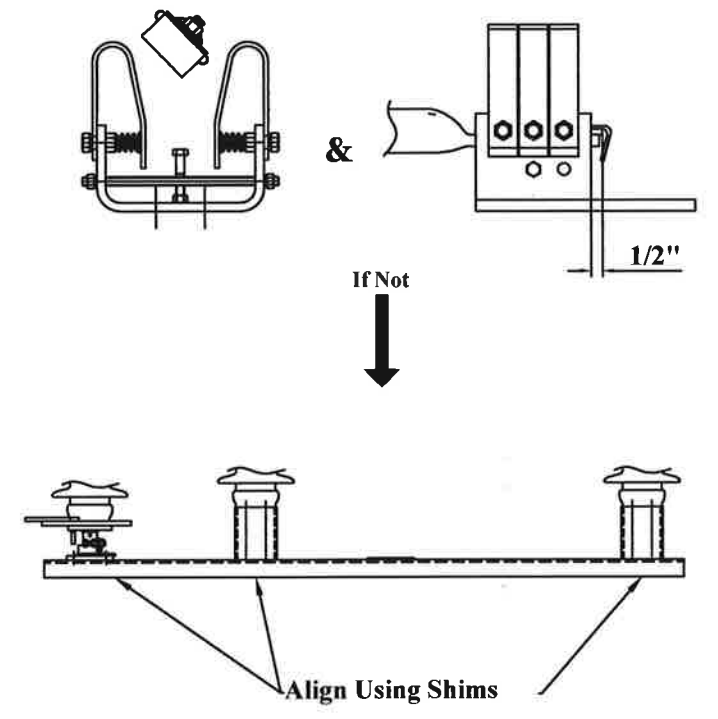
1 Verify Structure is Level and Plumb
Mounting Holes Match Installation Drawings

IMPORTANT

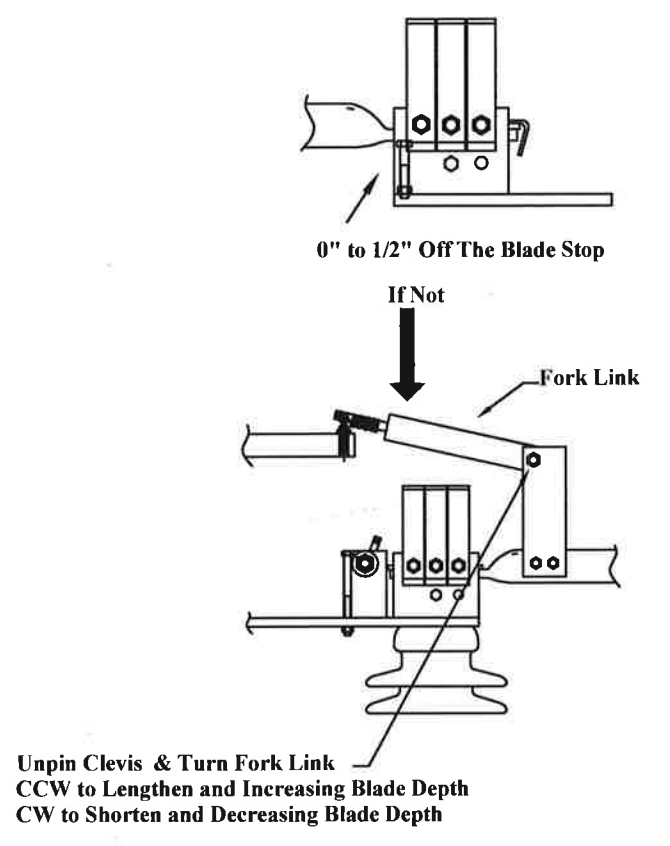
2 Assemble Single Pole
Plumb Insulators



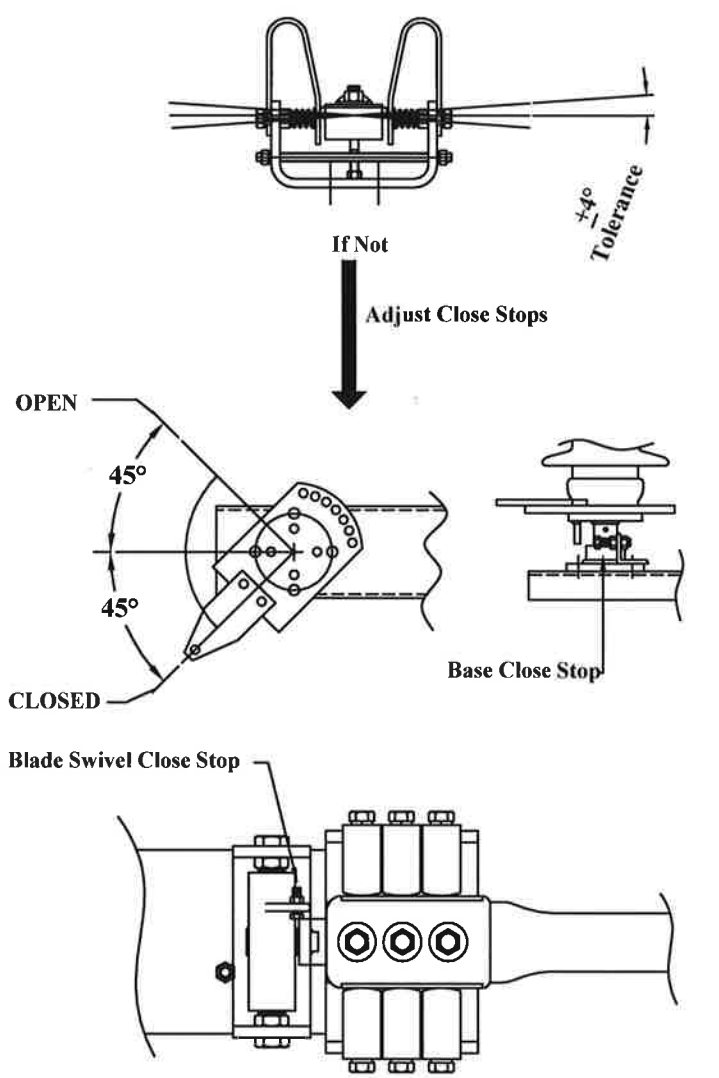
3 Center Blade In Jaw



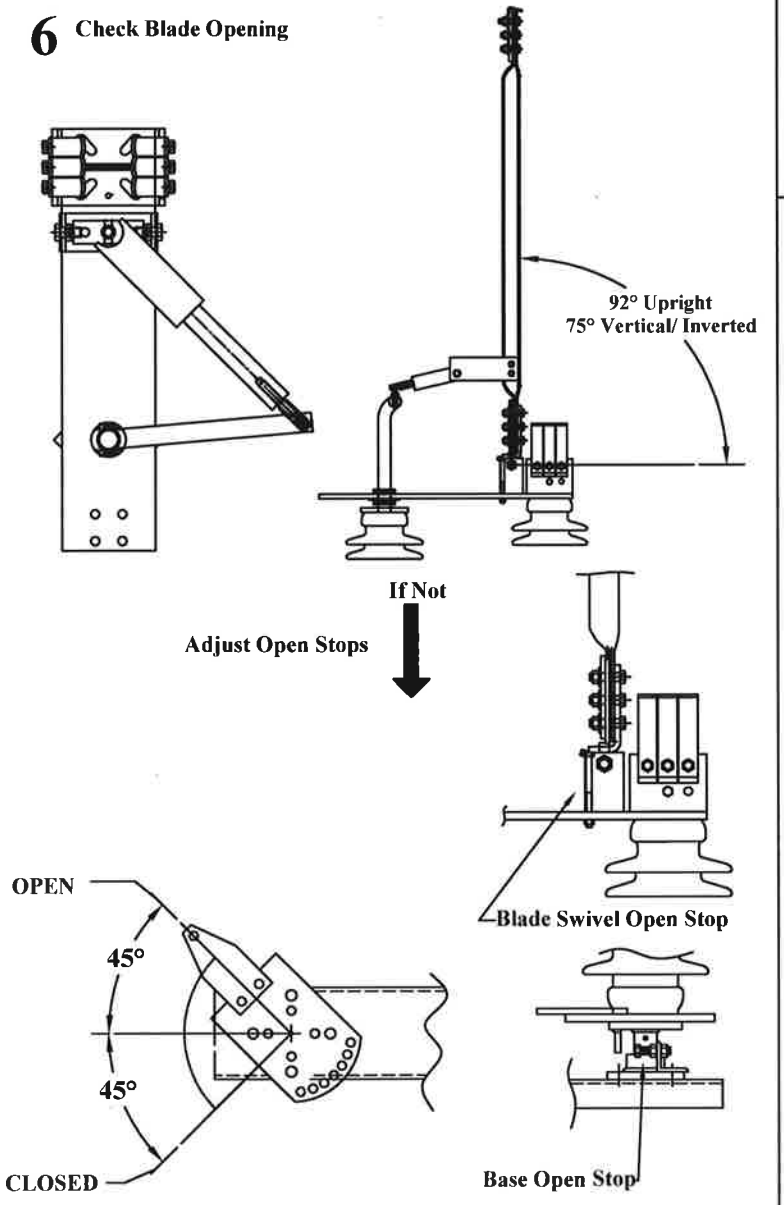
4 Check Blade Depth In Jaw



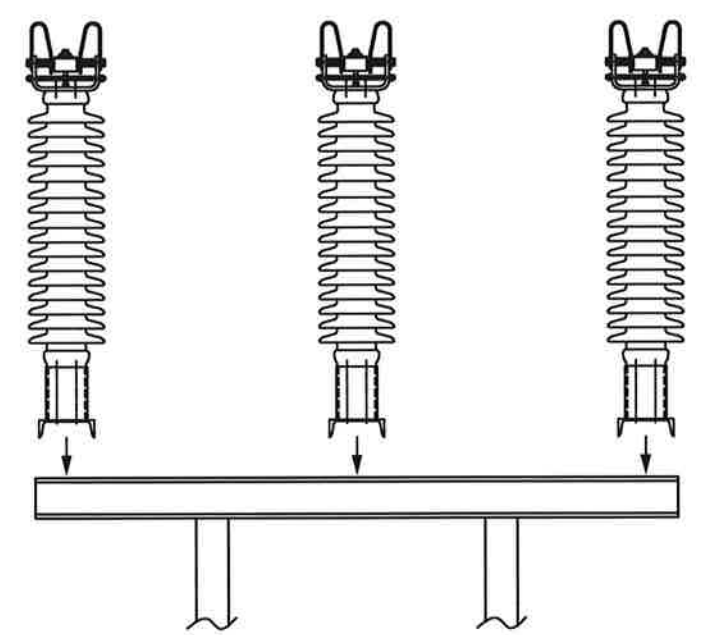
5 Check Blade Angle
Blade Angle Tolerance is $\pm 4^\circ$



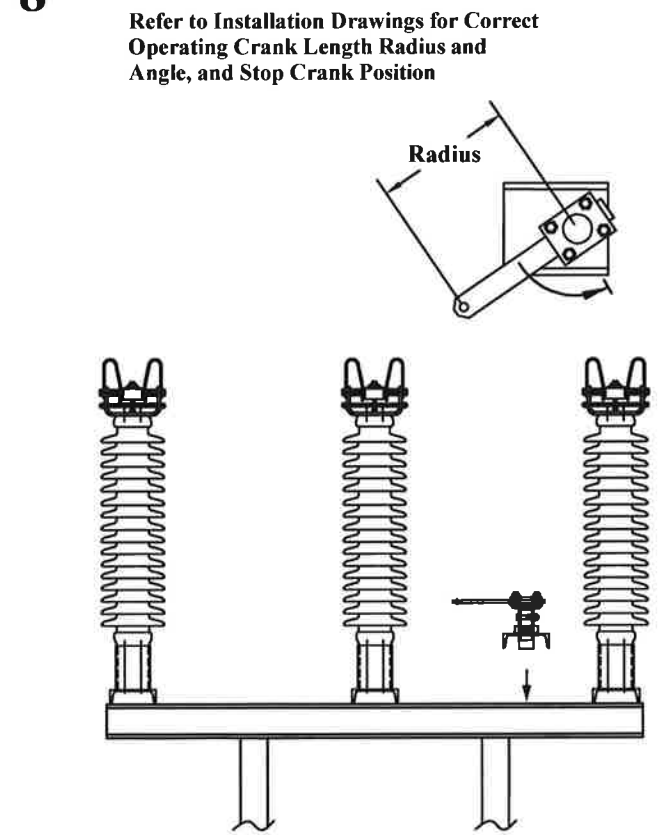
6 Check Blade Opening



7 Install Single Poles on Structure



8 Mount Offset Bearing



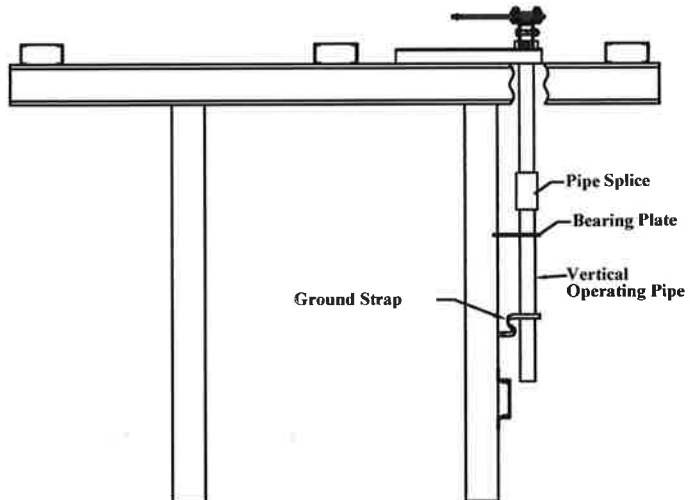
**FAS3 1200A
Vertical Break**

Basic Installation Guide

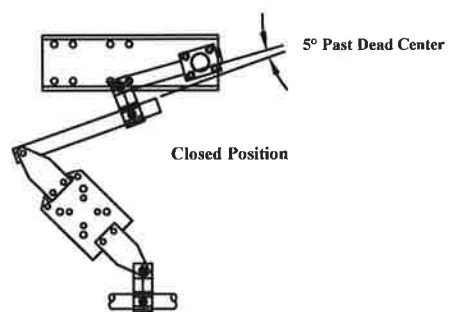
** This manual should be used in conjunction with the factory drawings. To request a set of drawings please have the serial number of the switch and contact the factory at 276-688-3328.

9 Install Vertical Operating Pipe

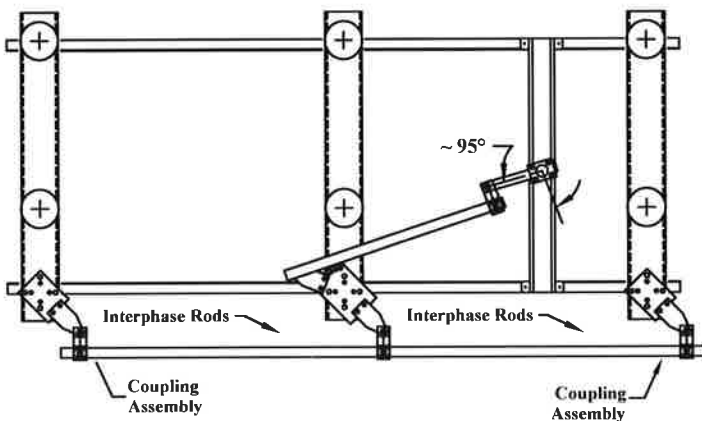
Install Pipe Splice, Bearing Plate, Position Indicators, and Ground Strap



- Dead Center ~ "Toggle"**
- Offset bearing crank travels past dead center.
 - When operating the switch, the offset bearing should "snap" over dead-center in the closed position. This is also referred to as toggle. This serves as a signal to the operator that the switch is fully closed. This is also a safety feature that insures the switch is locked in the closed position.

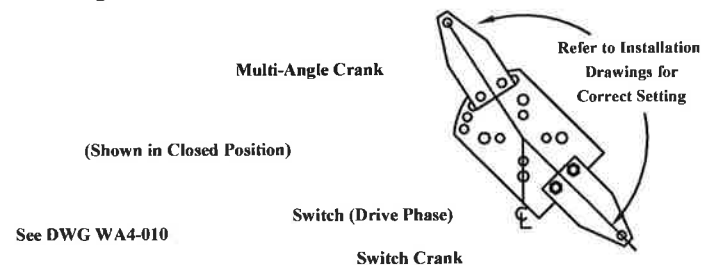


14 Install Interphase Linkage

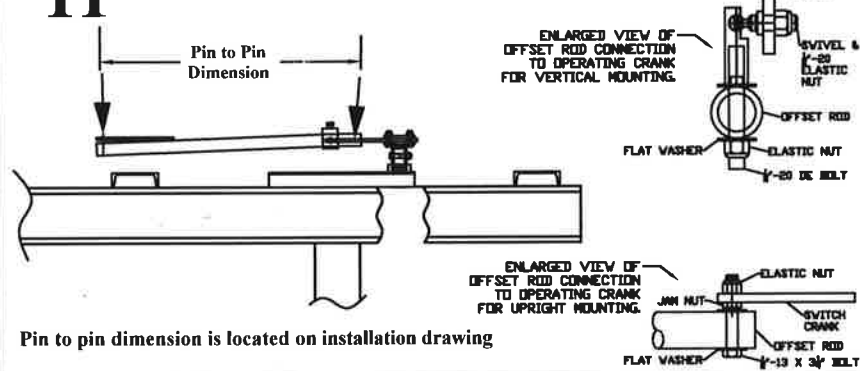


10 Install Multi-Angle Crank

Refer to Installation Drawings For Correct Setting

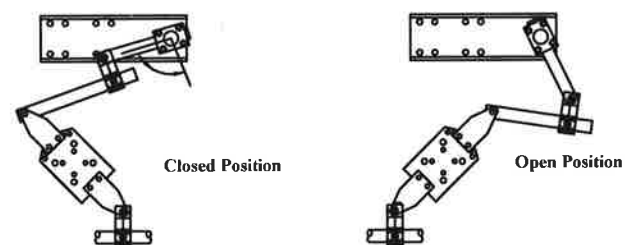


11 Install Offset Rod



Pin to pin dimension is located on installation drawing

13a Adjust Drive Phase



Pulling Switch Open

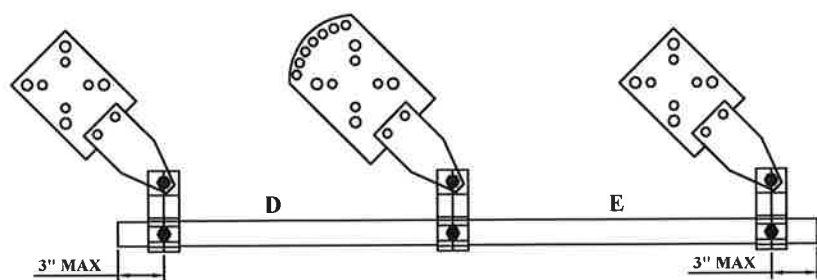
Shortening Offset Rod

- Reduces toggle pressure in closed and adds pressure to open position.
- Increase blade opening and decrease blade closing.

Lengthening Offset Rod

- Reduces toggle pressure in open and adds pressure to closed position.
- Increase blade closing and decrease blade opening.

15 Adjust Interphase Linkage



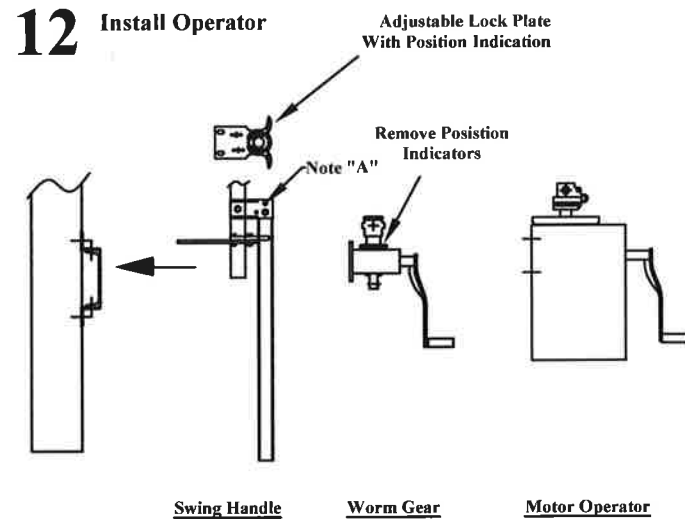
Interphase Pipe "D"

- Shorten will close more and open less.
- Lengthening will open more and close less.

Interphase Pipe "E"

- Shortening will open more and close less.
- Lengthening will close more and open less.

12 Install Operator

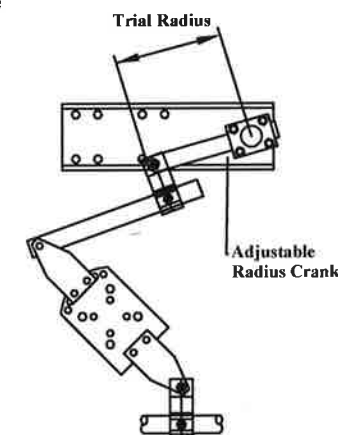


Note "A"
Remove 3/8" bolt to unlock swing handle. Lift handle and reinsert 3/8" bolt in open hole.

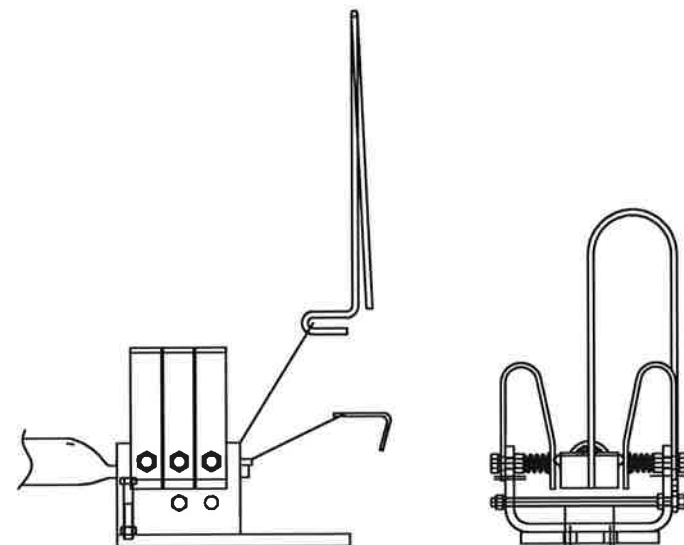
13b Adjust Drive Phase

The adjustable radius crank adjustment increases or decrease throw to the open and closed position.

- Lengthening increases travel and toggle pressure in open and closed.
- Shortening reduces travel and toggle pressure in open and closed.

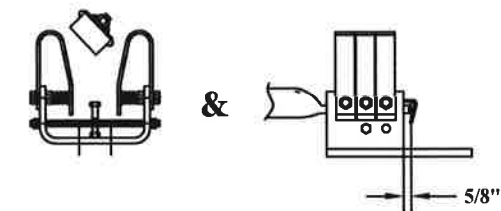


16 Install Arcing Horns and Corona Rings (If Applicable)

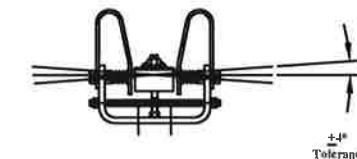


17 Final Checks

a. Blade Centered in Jaw



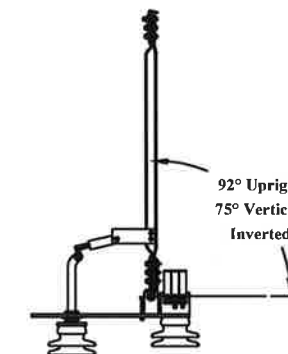
b. Blade Contact Angle is $\pm 4^\circ$ in Jaw



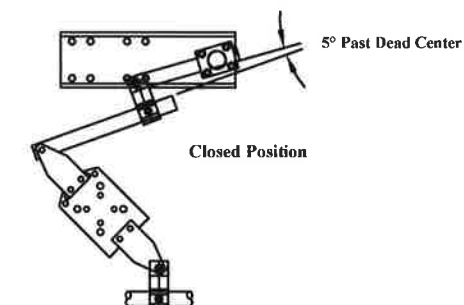
c. Blade is 0" to 1/2" Off the Blade Stop



d. Blade Opening



e. The offset bearing toggles in the close position.



f. All jaw mounting bolts are tightened with switch in close position.

g. Tighten all locking nuts and pierce bolts.

h. For worm gears - Position indicators are installed.

